

*Richco*TM

Commercial Resins for all Catering Floors



Richco Catering Floor Systems

Richco Limited manufactures and installs an extensive range of flooring systems. Richco Catering Floor Systems have been specifically designed for the industrial and commercial catering industry. Our range of high performance flooring offers seamless hygienic finishes which are installed to the highest of standards.

Richco Catering Floor Systems provide hygienic, food safe finishes which are essential for commercial kitchen floors and industrial catering areas.

- | | |
|-----------------------------------|-------------------------------|
| ✓ NO OBLIGATION - FREE QUOTATIONS | ✓ SINGLE SOURCE SERVICE |
| ✓ EXCLUSIVE WARRANTIES | ✓ IN-HOUSE APPLICATION TEAM |
| ✓ SPECIFICALLY DESIGNED SYSTEMS | ✓ EXTENSIVE RANGE OF PRODUCTS |



www.commercialcateringfloors.co.uk

CONTENTS

1 - 2 About Richco & Contents

3 - 4 Richco PU Catering Screed

5 - 6 Richco Quartz Screed

5 - 6 Richco SL PU

7 - 8 Richco Self Levelling Epoxy

7 - 8 Richco Flexible Liquid Vinyl

9 - 10 Richco Cleaning Regime

9 - 10 Richco Flooring Guide

Richco offer an extensive range of flooring options in addition to our Catering Floor Systems, for further information please contact us on 01268 495730 or visit our website at www.richcoltd.co.uk

Application

Richco's unique in-house application team have been given the highest levels of training possible. Our application team have many years of experience applying industrial and commercial catering flooring systems.

We process the equipment, dedication and knowledge to give total customer satisfaction by providing single source responsibility and reliability.

Quality Assurance

Richco are an experienced and professional organisation. We manufacture and apply our products in accordance with industry standards.

As a manufacturer and applicator we have the ability to stand behind the integrity of our workmanship offering guarantees on the application of our products.

Ideal Uses

- Commercial Kitchens
- Industrial Kitchens
- School Canteens
- Food Processing
- Cold Storage
- Freezers
- Breweries
- Production Areas
- Corridors
- Walkways



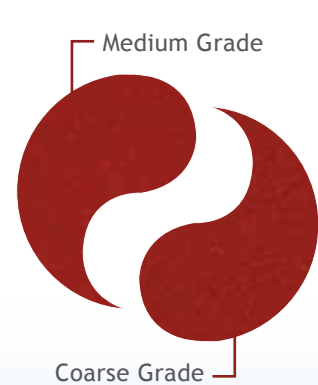


Richco PU Catering Screed

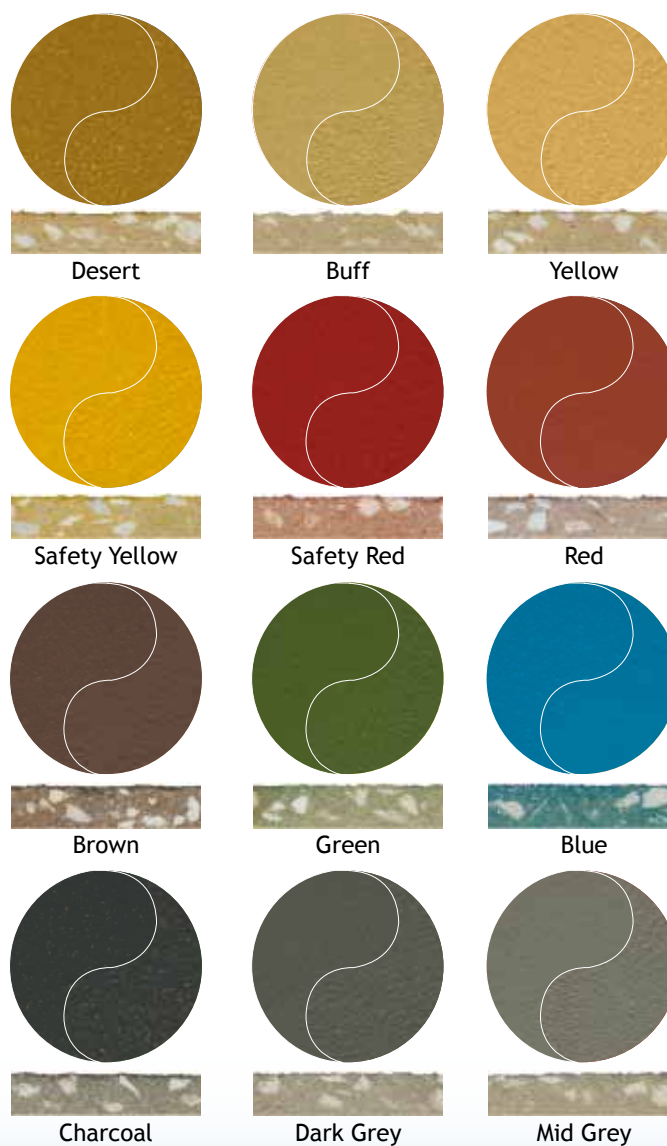
Richco PU Catering Screed is a heavy duty polyurethane based flooring system which provides a completely non-porous seamless surface. The completed surface does not provide a decorative finish, but is a practical floor for use within commercial kitchen areas.

Richco PU Catering Screed has been designed to provide excellent resistance to abrasion, chemical attack and other physical aggression including thermal shock from excessive heat up to 120°C. The finished system provides a hard wearing surface with the highest order of durability.

Richco PU Catering Screed is available in a range of colours with two grades of anti-slip finish; medium or coarse finish. Richco recommends that the finished surface is regularly cleaned by a scrubber dryer in order to maintain the slip resistant properties and cosmetics.



- Withstands Heat up to 120°C
- Range of Colours Available
- Hard Wearing & Durable
- Chemical Resistant
- Abrasion Resistant
- Seamless Finish
- Anti-Slip Finish



Other Colours are Available by Request



- 1 Sub-Base
- 2 Anchoring Point
- 3 Richco PU Catering Screed
- 4 Coving (built up wall)

Richco PU Coving Grade Screed is a lightweight trowel applied cove grade material based upon a liquid polyurethane resin system. It is designed specifically for use with Richco PU Catering Screed in order to maintain the same standards of resistance to abrasion and chemical contact. Richco PU Coving Grade Screed provides a smooth finish and therefore will vary slightly in colour to the PU Catering Screed floor finish.

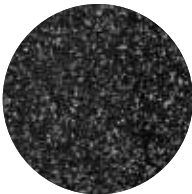
Richco Quartz Screed

Richco Quartz Screed is a multi-colour mottled effect epoxy floor screed produced by the combination of clear epoxy resins and pigmented quartz aggregates. The completed surface provides a decorative finish and is therefore ideal for use within commercial kitchen areas which are “on-show”.

Richco Quartz Screed exhibits the highest order of abrasion resistance and provides a hard wearing anti-slip surface. It is ideal for the use in commercial kitchens or industrial catering areas where a decorative hard wearing surface is required.

Richco Quartz Screed is available in a range of colours and can incorporate many patterns or logos as required.

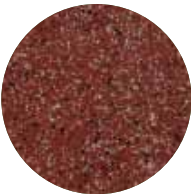
Richco recommends that the finished surface is regularly cleaned by a scrubber dryer to maintain the slip resistant properties and cosmetics.



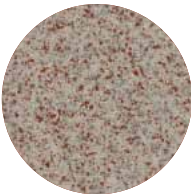
Midnight Sky



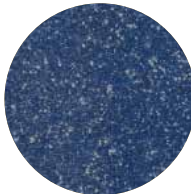
Stardust



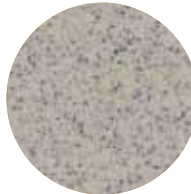
Volcano



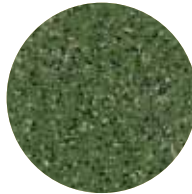
Cherry Blossom



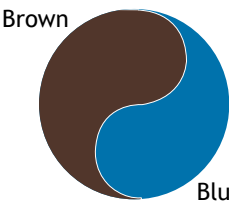
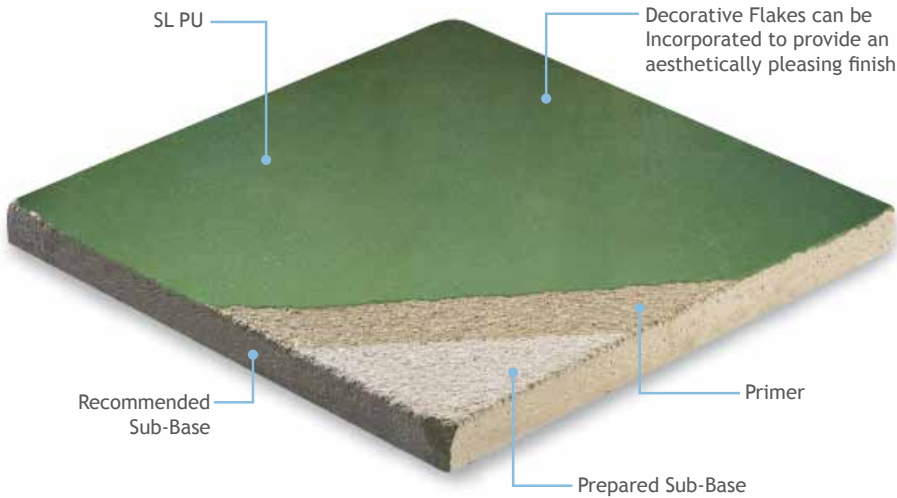
Twilight



Snow Storm

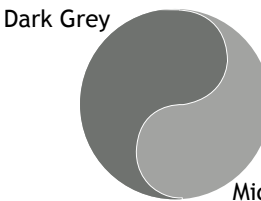


Meadow Green



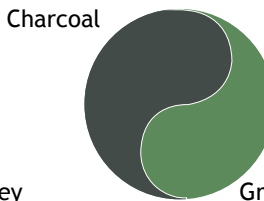
Brown

Blue



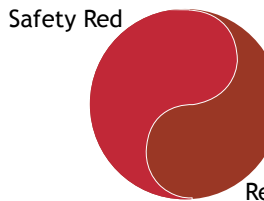
Dark Grey

Mid Grey



Charcoal

Green



Safety Red

Red



Desert

Yellow



Safety Yellow

Buff

Richco SL PU

Richco SL PU is a heavy duty self levelling polyurethane flooring system which is applied to a depth of between 3mm - 5mm. The completed surface does not provide a decorative finish, but is a practical floor for use within commercial kitchen areas.

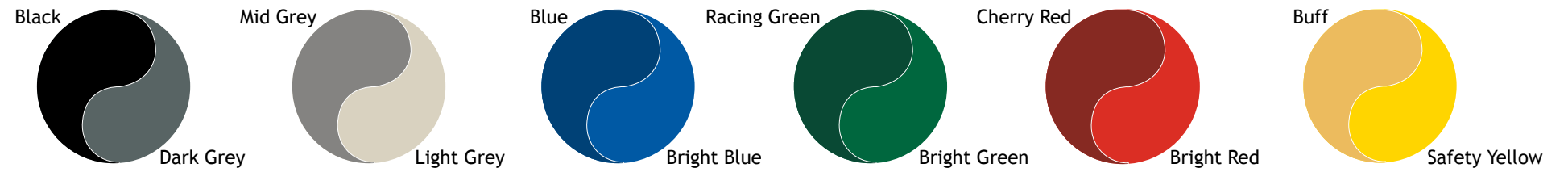
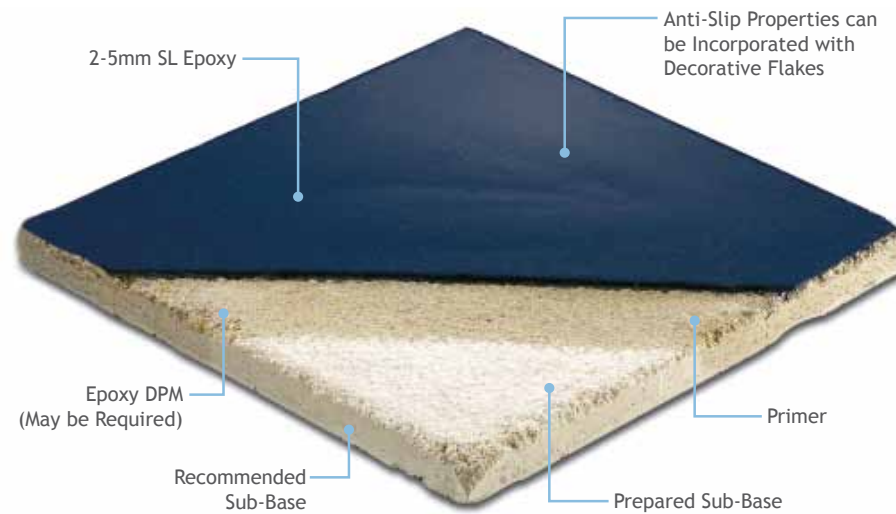
Richco SL PU has been designed to provide excellent resistance to abrasion, impact damage, chemical attack and other physical aggression. The finished system provides a hard wearing surface with the highest order of durability.

Richco SL PU is available in a range of colours and provides a seamless, matt, smooth finish.

Richco recommends that the finish surface is regularly cleaned by a scrubber dryer in order to maintain the slip resistant properties and cosmetics.



Richco Self Levelling Epoxy with Flake



Richco Self Levelling Epoxy

Richco SL Epoxy is a self-levelling flooring system which provides a seamless, hygienic, easy to clean surface with excellent resistance to chemicals. A variety of decorative anti-slip properties can be incorporated and is therefore ideal for application within service corridors or walkways.

Richco SL Epoxy can be used to even out rough floor finishes and can be applied at a thickness of between 2-5mm to provide a smooth gloss coloured finish. A coloured quartz aggregate, glitter or flake can be incorporated into the system to provide a decorative anti-slip finish.

Richco SL Epoxy is available in a range of base colours with a variety of decorative finishes depending on your requirements.

Richco recommends that the finished surface is regularly cleaned to maintain the cosmetics of the system.

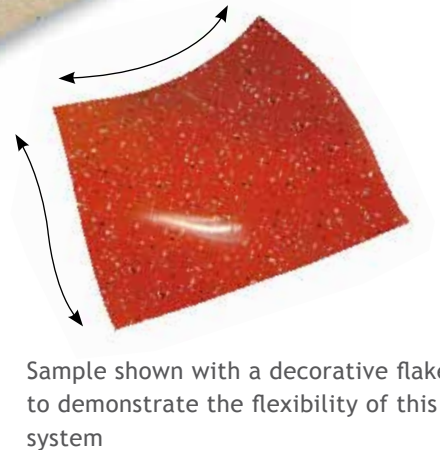
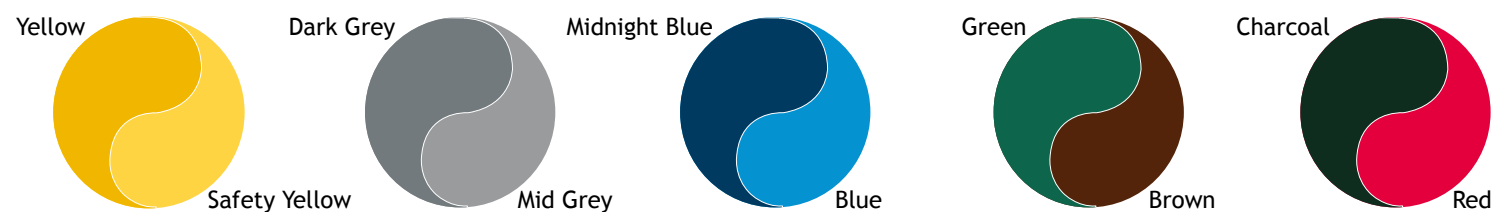
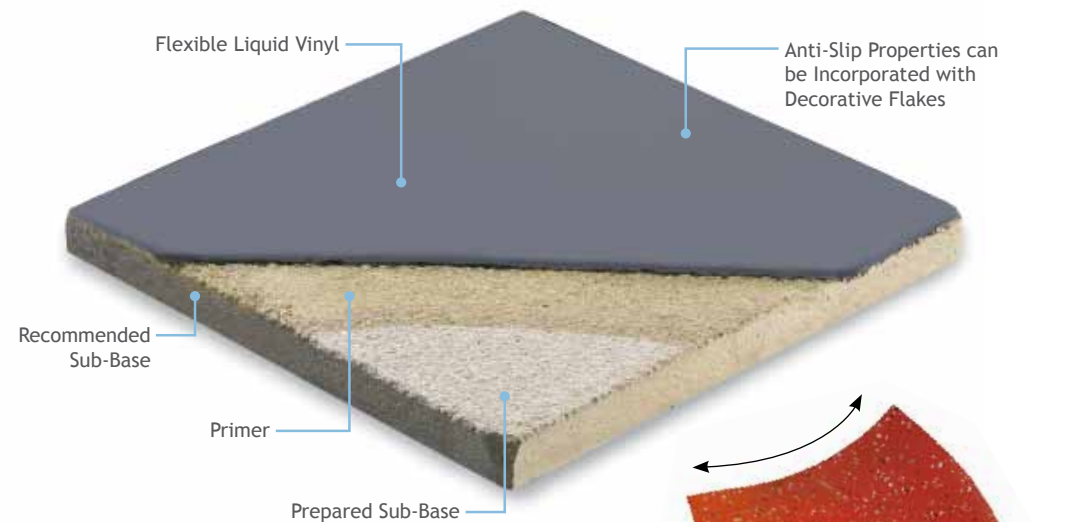
Richco Flexible Liquid Vinyl

Richco Liquid Vinyl is a flexible seamless resin system which provides excellent resistance to abrasion, chemical attack and other physical aggression. Richco Liquid Vinyl can incorporate a coloured flake to provide a seamless and decorative anti-slip finish.

Richco Liquid Vinyl is available in range of colours. The main advantages of Richco Liquid Vinyl against traditional vinyl is that it adheres directly to the sub-base, therefore there are no joins that can fail as it provides a seamless, flexible finish.

Richco Liquid Vinyl is suitable for use where a flexible seamless finish is required. It is widely used in commercial canteen areas, kitchens and corridors. Richco Liquid Vinyl can be used to replenish various floor finishes, such as terrazzo and concrete etc.

Richco recommends that the finished surface is regularly cleaned to maintain the cosmetics of the system.



Sample shown with a decorative flake to demonstrate the flexibility of this system



Richco Cleaning Regime

For the performance characteristics of Richco Flooring Systems to be maintained it is very important an appropriate cleaning regime is established.

Richco recommends weekly cleaning of our Flooring Systems or in high trafficked areas - daily cleaning.

The following is a step-by-step method, which will maintain Richco Flooring Systems to a good condition:



- 1 Sweep floor to remove loose debris and accumulation of soil.
- 2 Use the appropriate cleaning agent - detergent, deodoriser, degreaser or emulsifier.
- 3 Apply cleaning agent, diluted as per the manufacturer's instructions.
- 4 Use the Scrubber / Dryer as directed or alternatively agitate by hand using a stiff brush then flood with clean water and scrub.
- 5 Remove dirty water with wet vacuum (or squeegee if cleaned by hand).
- 6 Dispose of contaminated water whilst paying special attention to By-law Regulations prohibiting the introduction of certain chemicals and solvents into surface water drains and sewer systems.

CLEANING YOUR RICHCO FLOOR

Floor cleaning should be considered as having two elements, the first being a chemical component and the second being mechanical.

The chemical component, a cleaning solution which will dissolve or emulsify the soil or contamination present, following which the mechanical element is applied to the floor with a scrubbing motion, either by hand or where space permits by a mechanical scrubbing machine. Once this has taken place the removal of the dirt and rinsing the floor is the key to successful maintenance. It is essential that clean water is used for rinsing.

Do not use a mop and bucket on routine cleaning of the floors - this method of cleaning should only be used when dealing with spillages. In normal everyday usage the mop and bucket may remove heavy soiling but often the water is changed infrequently therefore the floor is usually wiped with dirty water and a film of dirt will spread uniformly across the floor which overtime will cause a matt surface.

RECOMMENDED CLEANING SUPPLIES

For any details with regards to cleaning products and particular cleaning methods, we recommend that you speak direct to companies who specialise in cleaning products and cleaning machinery.

CLEANING CHEMICALS

It is very important that the cleaning chemicals are diluted as per the manufacturer's guidelines; some materials will have an adverse effect on the floor if used in the wrong concentration, giving rise to etching, softening or other damage to the surface or body of the floor finish.

Bleach is not recommended for the cleaning of Richco Flooring Systems as it will cause the colour to fade after a period of prolonged use.

Richco will not be held responsible for incorrect cleaning procedures resulting in damage to the floor.

POLISHING

All of Richco flooring systems are different; some of our floors would benefit from having a high solids metallised floor polish applied to the surface periodically to maintain a gloss finish.

Richco would recommend that a 25% solids metallised floor polish is applied for a durable gloss finish. The high solids polish is for use in medium to heavy traffic areas where a hard wearing deep lustrous finish is required. There is no need for buffing as the high solids metallised polish dries to a high gloss finish.

All polishes must be applied to the surface as per the manufacturers instructions.

CRYSTAL GRIP

All of Richco flooring systems are different; some of our floors would benefit from having Crystal Grip applied over a polished surface. Crystal Grip is a specialist product which cleans polished floors and leaves a slip resistant polymer finish. Richco would recommend that Crystal Grip is applied to a polished floor surface periodically.

Crystal Grip is a detergent with cleaning properties which also leaves behind a low molecular weight polymer. This makes floors safer to walk upon and will not damage polish films.

Crystal Grip must be applied to the surface as per the manufacturers instructions.

Richco System Flooring Guide

		Richco PU Catering Screed		Richco Quartz Screed	Richco SL PU	Richco SL Epoxy	Richco Liquid Vinyl
		Medium Grade	Coarse Grade				
Nominal Thickness (mm)		6-9	6-9	4-6	4-6	3-5	2-3
Surface Finish Appearance		Flat even matt surface	Flat even matt surface	Flat even matt surface	Flat even matt surface	Smooth gloss surface	Smooth gloss surface
Coving Available (Y/N)		Y	Y	Y	N	N	N
Minimum Curing Time (Foot Traffic)		12 Hours	12 Hours	12 Hours	12 Hours	12 Hours	12-16 Hours
Fast Cure Available (Y/N)		N	N	Y	N	Y	N
Application Technique		Trowel and Back Roll	Trowel and Back Roll	Trowel	Rake and Spike Roller	Rake and Spike Roller	Rake and Spike Roller
Slip Resistance Rating	WET	45-55	45-55	40-45	30-35	Varies depending on finish	Varies depending on finish
	DRY	65-70	65-70	60-65	60-65	Varies depending on finish	Varies depending on finish

The slip resistance of Richco Catering Flooring Systems is directly proportional to the thickness applied and various other factors including traffic, mechanical and chemical use, impact damage and house keeping practices.

Other Richco Brochures

Richco provides a large range of high quality surfacing products to suit all flooring solutions. What ever your industry, Richco can provide a flooring system to suit. Please visit the corresponding website to find out more or alternatively, contact Richco directly for a brochure on 01268 495730.



Richco Fire Brigade System

Richco Fire Brigade System has been specifically designed and manufactured for the installation onto appliance bay floors at fire stations. The finished system provides a hard wearing finish that tolerates the weight of the appliances whilst achieving the maximum anti-slip properties

Richco also offer site surveys and provide a full report on the floor condition, recommendations and specification.

www.richcoltd.co.uk



Richco Automotive Systems

Richco Automotive Flooring Systems provide a seamless, non porous surface that reduces cleaning time and maintenance costs. The complete system provides an aesthetically pleasing surface as well as being functional and durable.

Our range of hard wearing, oil and slip resistant floor coatings have been designed to transform your workshop or carpark surface.

www.automotivefloors.co.uk



Theme Park and Leisure Systems

Richco is the solution-providing company that specialises in offering a unique and dependable service to all Theme Parks, Zoological and Leisure Industries.

Richco offers a range of products and services to satisfy individual customer needs that can be specifically designed and installed for each particular project. Our products include anti slip, decorative and safety surfacing.

www.themeparkflooring.co.uk



Richco House, Newlands End, Laindon North, Basildon, Essex, SS15 6DU

Telephone: 01268 495730 | Fax: 01268 411989

Email: info@richcoltd.co.uk

www.richcoltd.co.uk